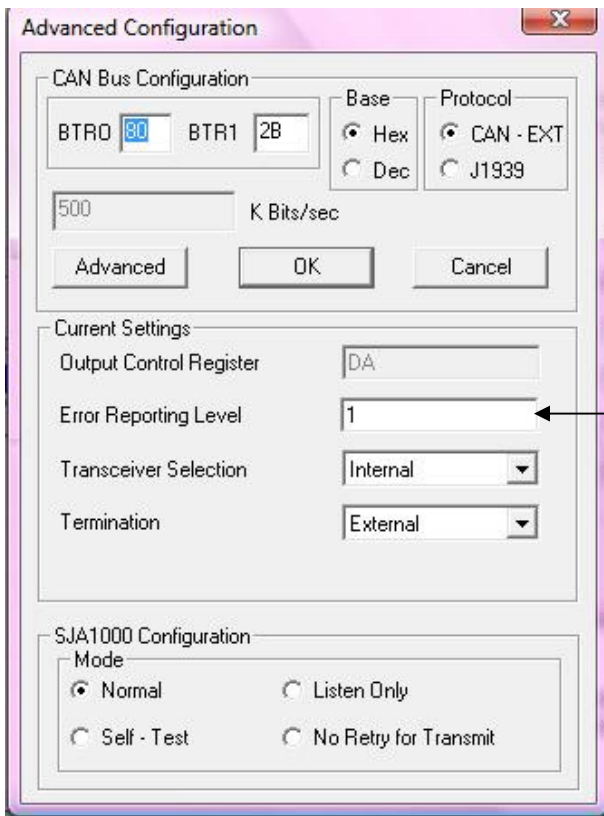


Question: In the Information View the Error Report Level states 01 - Rep.. Bus Warn & Bus Error. What does this represent?

The Error Report Level 01 – Rep. Bus Warn & Bus Error indicates that all Bus Errors will be reported from the Gryphon to Hercules.

The type of Bus Errors depends on the type of hardware cards the Gryphon Family Product contains. The last two pages of this document list the various Events for the different hardware protocol cards. This type of information can be accessed directly from the Gryphon Family Product hardware via a web browser by entering the IP address in the URL.

SJA1000 CAN has the capability of setting different Error Reporting Levels



To set different Error Reporting Levels:

Select Hardware & Protocol Configuration

Select the Advanced Configuration button on the DG-CAN SJA1000 channel.

The Error Reporting Level in Hercules defaults to 1.

0 = Report Bus Warn and Bus Off Conditions

1 = Report all bus errors

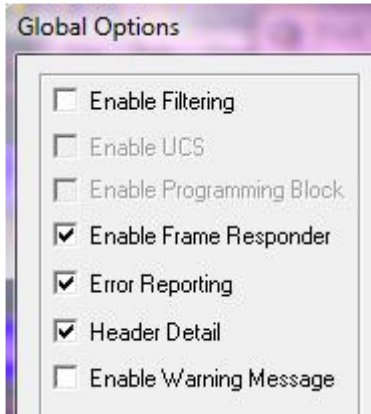
2 = Report Data overrun

4 = Report arbitration lost

Hercules Error Reporting



If the Information View window contains a check in the Error Reporting box the errors will appear in the Information View window.

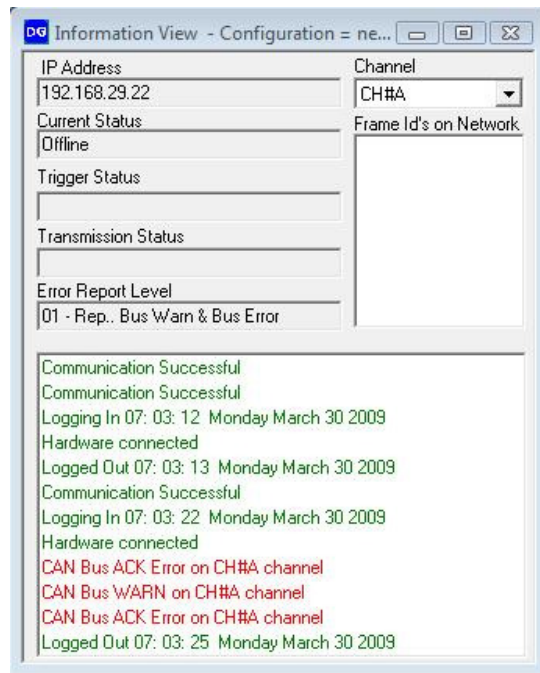


The selection of Configuration | Global Options opens the Global Options window. The Error Reporting check box sets Error Reporting ON or OFF.

A check indicates ON.

No check indicates OFF.

When the Error Reporting check box contains a check any errors that occur on the bus during an ONLINE session will appear in the Information View window. See the example below. There may be times when no error reporting is helpful.





Gryphon Family Product Event Lists

SJA1000 CAN Events	SJA1000 CAN Fault Tolerant Events	QUAD CAN (1 SWCAN and 3 CAN) Events
Bus Off	Bus Off	Bus Off
Bus Warning	Bus Warning	Bus Warning
Bus OK	Bus OK	Bus OK
Error Frame	Error Frame	Error Frame
Arbitration lost	Arbitration lost	Arbitration lost
Receiver overflow	Receiver overflow	Receiver overflow
Form error	Form error	Form error
Acknowledgement error	Acknowledgement error	Acknowledgement error
Bit error	Bit error	Bit 1 error
Other	Other	Other
Input Trigger value 1	Input Trigger value 1	
Input Trigger value 0	Input Trigger value 0	
	Fault Tolerant transceiver charge state	

Dual 82527 CAN Events	Dual 82527 SW CAN Events	SJA1000 SW CAN Events
Bus Off	Bus Off	Bus Off
Bus Warning	Bus Warning	Bus Warning
Bus OK	Bus OK	Bus OK
Error Frame	Error Frame	Error Frame
Wake-Up	Wake-Up	Wake-Up
CRC error	CRC error	CRC error
Receiver Overflow	Receiver Overflow	Receiver overflow
Form error	Form error	Form error
Acknowledgement error	Acknowledgement error	Acknowledgement error
Bit 1 error	Bit 1 error	Bit 1 error
Bit 0 error	Bit 0 error	Bit 0 Error



Gryphon Family Product Event Lists

Dual DLC Events	HBCC Events	LIN Events
Receive overflow	Receive error	LIN card reset
CRC error	Receiver Overflow	Invalid ID
Incomplete byte	Unacknowledgeable error	Received Synch Field is not 0x55
Bit timing error	Transmit error limit reached	A wakeup signal was received
Break received	Arbitration lost error limit reached	Sleep command received or bus activity time out
Net fault detected	Network fault detected	Master failed to respond to wakeup sequence
Transmit underrun	Wake-up detected	Bit Rate has changed
Arbitration lost		