

Hercules Database Clone Feature

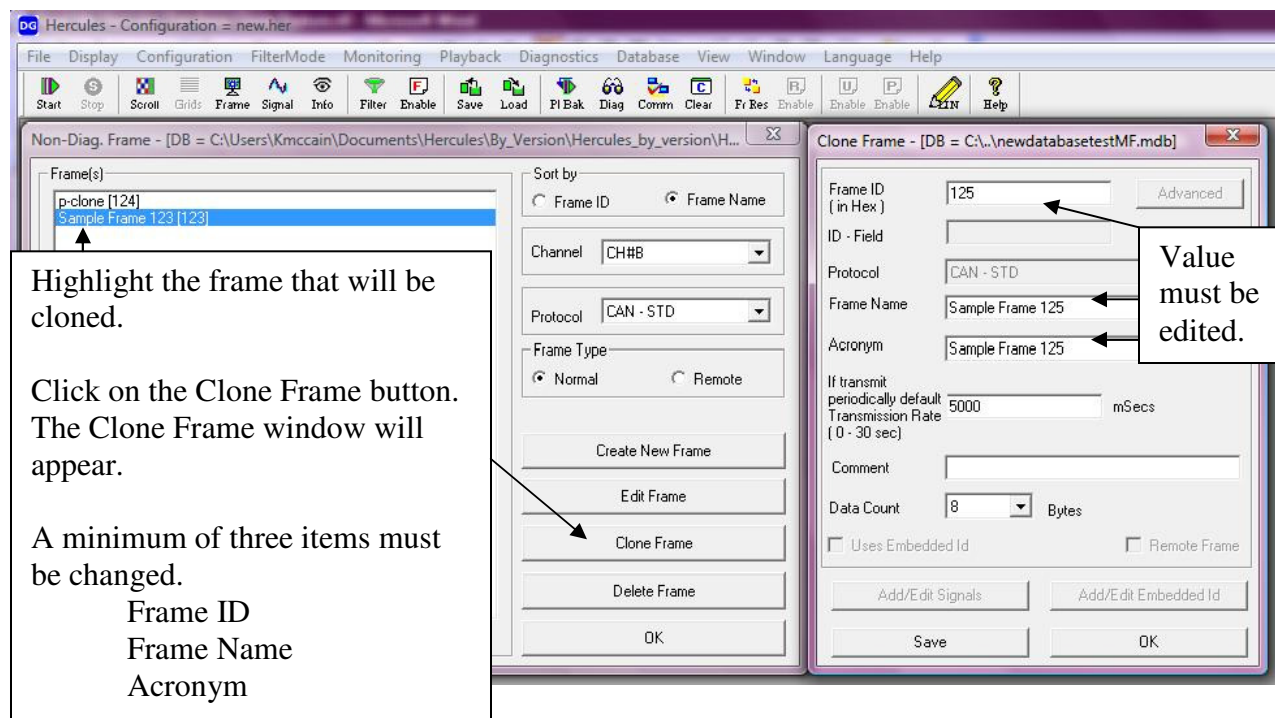


Hardware: Dearborn Group's Gryphon family products (S-CAT, S-CAT2, S3, G2) with the LIN 2.0 daughter card.

Software: Dearborn Group's Hercules - Protocol Analyzer software

The Clone Frame feature has been added to the Database features to enable quick duplication of frame details. There are three restrictions to the database feature. There can not be duplicate Frame ID, a duplicate Frame Name or a duplicate Frame Acronym.

A minimum of those three items must be modified for a frame to be cloned.



How to Clone a Frame:

1. Associate a Database.
2. Then select Non-Diag. Frame Data or select Diag Frame-> Diag. Frame Physical Address. Highlight a frame from the list on the left by clicking on it.
3. Then click on Clone Frame button. This will cause the Clone Frame window to open.
4. At a minimum change the Frame ID, Frame Name, and the Acronym.
5. Click the Save button to create the new frame. Click the OK button to close the window.