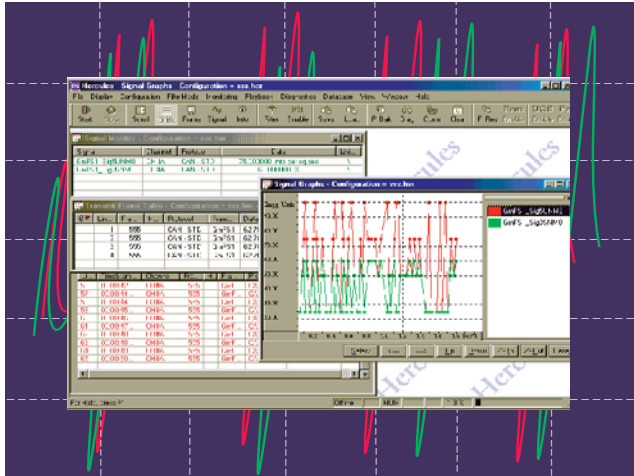


# HERCULES

A high performance analyzer with diagnostic capabilities



## ► CAN

ISO 11898  
Fault-tolerant (ISO11519-2)  
Single-wire (J2411)

## ► LIN

## ► J1850

Class2  
SCP

## ► Filter/ Triggering

- Filtering and triggering on header (identifier)
- Filtering on data includes raw data, engineering value, or value range
- Triggering on message or events (such as CAN error frame, etc.)
- Filters work on receive and transmitted frames

## ► Diagnostics

- View diagnostics online
- Hot key send of services
- Support of all ISO15765 & J1979 services
- Log session to file
- Optional padding on/off
- Optional tester present on/off

## ► Playback

- Real-time playback of data (playback supports once and continuous playback)
- Imports Vector log and CAT files

## ► Statistic Monitor

- Displays transmit/receive errors
- Graphical or numerical display
- Log to file

## ► Advanced

### User Configured Scheduler (UCS)

- Easy to use command tool

### Program Block Editor Compiler (PBEC)

- Advanced C-like script tool

## ► Database

- Used for translation of network frames
- Usage of multiple databases (linked to individual channels)
- Import of Vector database files (.txt and .dbc)

## ► Information View

- Notification of error and error types
- Scaling of notification of error and error types
- Display of IDs on network

## ► Viewing Data (monitors)

### Scrolling monitor

- User selectable color coding for frames
- Decoding of GMLAN 29-bit headers and J1939
- Right mouse click displays decoded data
- Offline step-through playback of decoded data in signal/ in-place frame monitor
- One stroke pause (P)
- Find frame to locate messages in file
- Supports up to 6 network channels simultaneously

### In-place monitor

- View selected frames in static position

### Signal monitor

- Decoded display of signals (data)
- Save translated signals to file
- Color change (red) when signal out of range

### Signal Graph

- Displays decoded signals in decoded value line graph
- Up to 20 signals

## ► Transmit

### Transmit frame table

- Hot key send of messages (periodic or single-shot)
- Transmit remote frame request/ response (SJA1000module only)
- Associate frames (for sending "pre-frame")
- Cut (Ctrl-C)/ paste (Ctrl-V) for messages
- Supports sending high voltage wakeup on SW-CAN
- Master/slave emulation for LIN

### Frame Responder

- Sends frames on network on receipt of other frames
- Can be utilized as a gateway

# Product Specifications

<b>Product Designation</b>	<b>DG-HERCULES</b>
<b>Base System</b>	- 32-bit, Windows-based software
<b>System Requirements</b>	<ul style="list-style-type: none"><li>- 486/33 MHz PC, min., (233 MHz Pentium-class, or higher recommended)</li><li>- 16 MB RAM, min., (64 MB recommended)</li><li>- 256K cache memory</li><li>- VGA monitor (or better)</li><li>- Windows 95, NT, 98, or 2000, or higher</li></ul>
<b>Hardware Requirements</b>	<ul style="list-style-type: none"><li>- <i>GRYPHON</i><sup>TM</sup> hardware, (high-speed Ethernet interface)</li><li>- <i>GRYPHON</i><sup>TM</sup> S-3 hardware</li><li>- Super CAN Analysis Tool 2 (S-CAT2) hardware</li></ul>

<b>Gryphon and S-CAT Optional Protocol Modules</b>	DG-GRYPH-MOD-X
<b>CAN modules</b>	<b>J1850 modules</b>
<b>T</b> ISO 11898 CAN (82527)	<b>F</b> Ford J1850 (SCP)
<b>W</b> Single-wire CAN (SJA1000sw)	<b>G</b> GM J1850 (Class 2, DLC)
<b>I</b> ISO 11992 CAN	<b>C</b> Chrysler J1850 (VPW), SCI
<b>J</b> ISO 11898 CAN (SJA1000)	<b>Other modules</b>
<b>A</b> Fault-Tolerant CAN (SJA1000FT)	<b>H</b> Honda UART**
	<b>L</b> LIN

<b>Special GMLAN Features</b>	<ul style="list-style-type: none"><li>- GM Monarch UEF database import</li><li>- Support of all GMLAN GMW3110 version 1.4 services</li><li>- Decoding of source address for GMLAN in Information View</li><li>- Support for Virtual Network data</li><li>- Associate frame (in TFT) can be used to send SWCAN wake up message prior to sending normal message</li><li>- Auto-switch into high speed mode for SWCAN and Class2</li><li>- Common VLT features, such as "P" pause, etc.</li></ul>
-------------------------------	--

## Applications

**Monitoring**

**Analysis**

**Diagnostics**

**Simulation**

**Custom applications**

For product or domestic and international sales office information, contact:

### Dearborn Group Inc.

27007 Hills Tech Court  
Farmington Hills, MI 48331  
(248) 488-2080  
(248) 488-2082 FAX