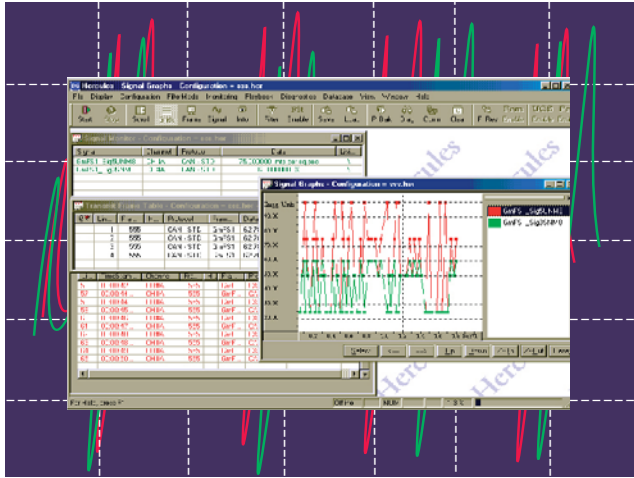


HERCULES

A high performance analyzer with diagnostic capabilities



► CAN

ISO 11898
Fault-tolerant (ISO11519-2)
Single-wire (J2411)

► LIN

► J1850

Class2
SCP

► Filter/ Triggering

- Filtering and triggering on header (identifier)
- Filtering on data includes raw data, engineering value, or value range
- Triggering on message or events (such as CAN error frame, etc.)
- Filters work on receive and transmitted frames

► Diagnostics

- View diagnostics online
- Hot key send of services
- Support of all ISO15765 & J1979 services
- Log session to file
- Optional padding on/off
- Optional tester present on/off

► Playback

- Real-time playback of data (playback supports once and continuous playback)
- Imports Vector log and CAT files

► Statistic Monitor

- Displays transmit/receive errors
- Graphical or numerical display
- Log to file

► Advanced

User Configured Scheduler (UCS)

- Easy to use command tool

Program Block Editor Compiler (PBEC)

- Advanced C-like script tool

► Database

- Used for translation of network frames
- Usage of multiple databases (linked to individual channels)
- Import of Vector database files (.txt and .dbc)

► Information View

- Notification of error and error types
- Scaling of notification of error and error types
- Display of IDs on network

► Viewing Data (monitors)

Scrolling monitor

- User selectable color coding for frames
- Decoding of GMLAN 29-bit headers and J1939
- Right mouse click displays decoded data
- Offline step-through playback of decoded data in signal/ in-place frame monitor
- One stroke pause (P)
- Find frame to locate messages in file
- Supports up to 6 network channels simultaneously

In-place monitor

- View selected frames in static position

Signal monitor

- Decoded display of signals (data)
- Save translated signals to file
- Color change (red) when signal out of range

Signal Graph

- Displays decoded signals in decoded value line graph
- Up to 20 signals

► Transmit

Transmit frame table

- Hot key send of messages (periodic or single-shot)
- Transmit remote frame request/ response (SJA1000module only)
- Associate frames (for sending "pre-frame")
- Cut (Ctrl-C)/ paste (Ctrl-V) for messages
- Supports sending high voltage wakeup on SW-CAN
- Master/slave emulation for LIN

Frame Responder

- Sends frames on network on receipt of other frames
- Can be utilized as a gateway

Product Specifications

Product Designation

DG-HERCULES

Base System

- 32-bit, Windows-based software

System Requirements

- 533 MHz PC, minimum
- 256 MB RAM (1 GB recommended for Vista), minimum
- 1GB available hard drive space, minimum
- Windows Vista (all versions), XP (all versions), 2000

Hardware Requirements

- *GRYPHON*TM 2, (Ethernet interface)*
- *GRYPHON* 3, (Ethernet interface)*
- *GRYPHON*, (Ethernet interface)*

* Hardware cabling optional

Gryphon Optional Protocol Modules

DG-GRYPH-MOD-X

CAN Modules

- J** ISO 11898 CAN (SJA1000)
- A** Fault-Tolerant CAN (SJA1000FT)
- R** 4 ISO 11898-2 CAN CHANNELS
- Q** 3 ISO 11898-2 CAN CHANNELS, 1 J2411
- T** ISO 11898 CAN (SJA1000)
- S** Single Wire CAN (82527sw)

J1850 & Other Standard Modules

- F** Ford J1850 (SCP)
- G** GM J1850 (Class 2, DLC)
- C** Chrysler J1850 (VPW), SCI
- K** KWP 2000/ISO9141
- IO** 2 Digital Inputs, 4 Digital Outputs
- L2** L2 Dual LIN
- M01** J1708

Special GMLAN Features

- GM Monarch UEF database import
- Support of all GMLAN GMW3110 version 1.4 services
- Decoding of source address for GMLAN in Information View
- Support for Virtual Network data
- Associate frame (in TFT) can be used to send SWCAN wake up message prior to sending normal message
- Auto-switch into high speed mode for SWCAN and Class2
- Common VLT features, such as "P" pause, etc.

Applications

Monitoring

Analysis

Diagnostics

Simulation

Custom applications

For product or domestic and international sales office information, contact:

Dearborn Group Inc.

27007 Hills Tech Court
Farmington Hills, MI 48331
248.488.2080
248.488.2082 fax